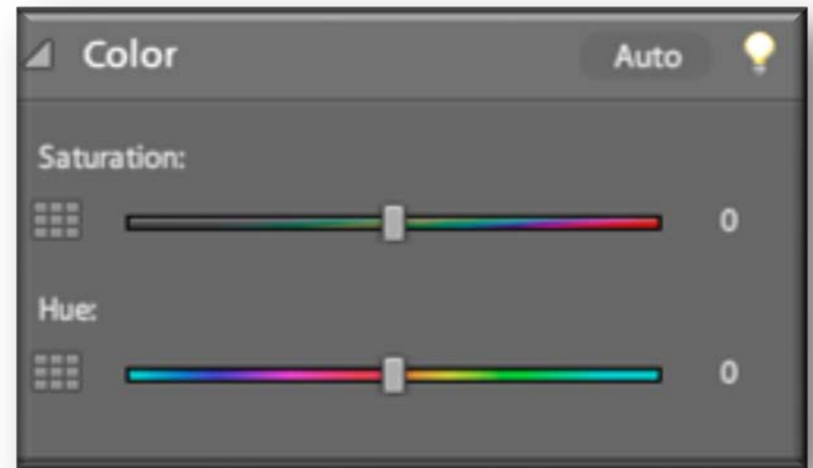
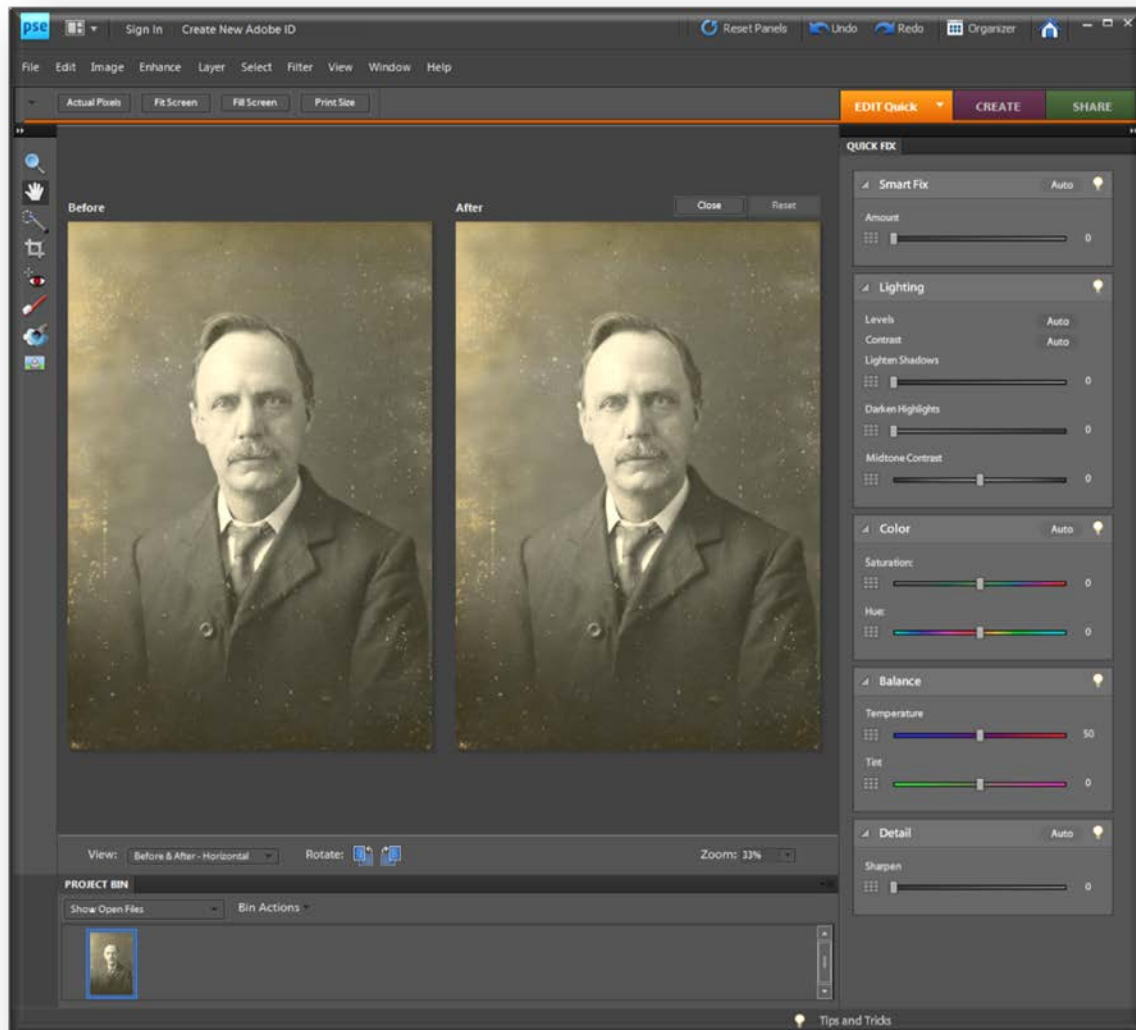


# Correct color in Quick Fix



# Correct color in Quick Fix



- **Quick Fix conveniently assembles many of the basic photo-fixing tools in Photoshop Elements**
- **As you work in Quick Fix, limit the number of color and lighting controls that you apply to a photo**



# Correct color in Quick Fix

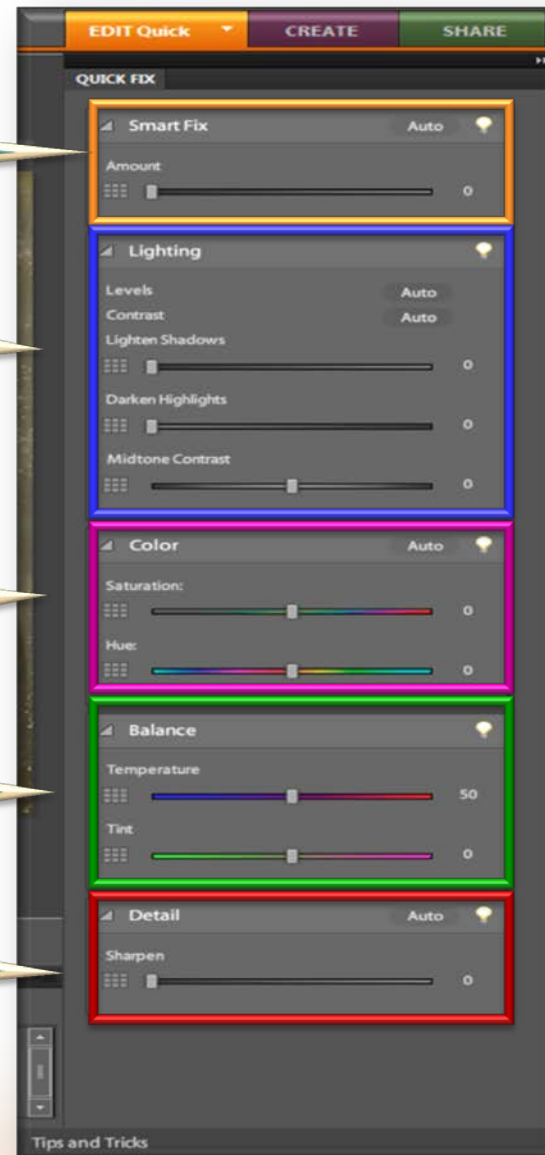
Smart Fix

Lighting

Color

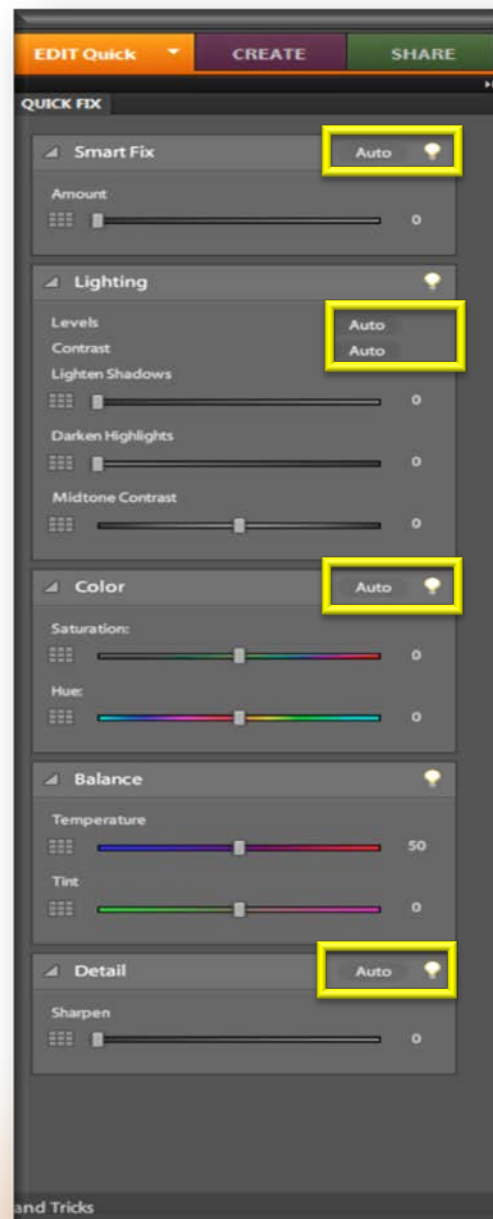
Balance

Detail



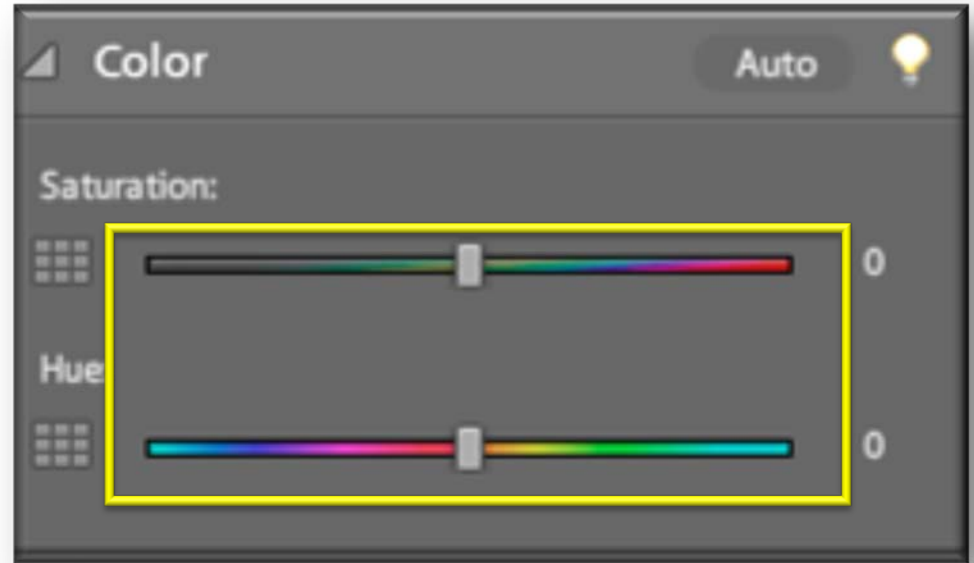
# Correct color in Quick Fix

- Generally, you use only one of the auto controls at a time on a photo
- If that control doesn't achieve what you want, click the Reset button and try another one

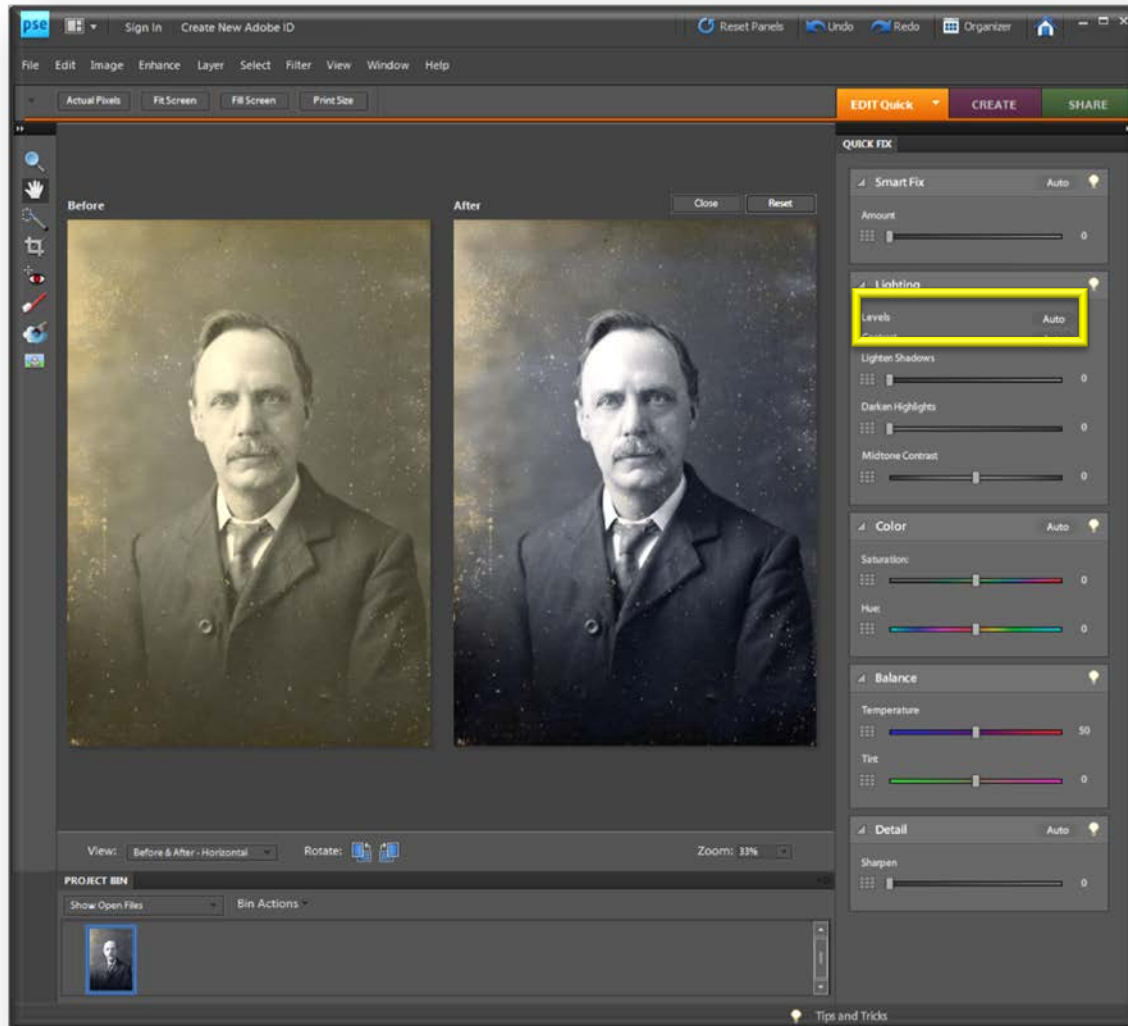


# Correct color in Quick Fix

- You can also adjust your image using the slider controls, whether you've used an auto control or not
- Perform the Sharpening fix last on an image




# Correct color in Quick Fix



Use the Auto Lighten Shadows adjustment in Quick Fix to instantly fix the photo





**Any reference to or reproduction of material contained herein should include attribution to MyGenShare.com.**

**This material may not be reproduced for commercial purposes without permission from the owner.**

**All trademarks referenced herein are intellectual property of MyGenShare.com.**



**A production of**

**MyGenShare.com™**

**Sharing Information to Join Generations™**

**© MyGenShare.com 2012. All Rights Reserved.**