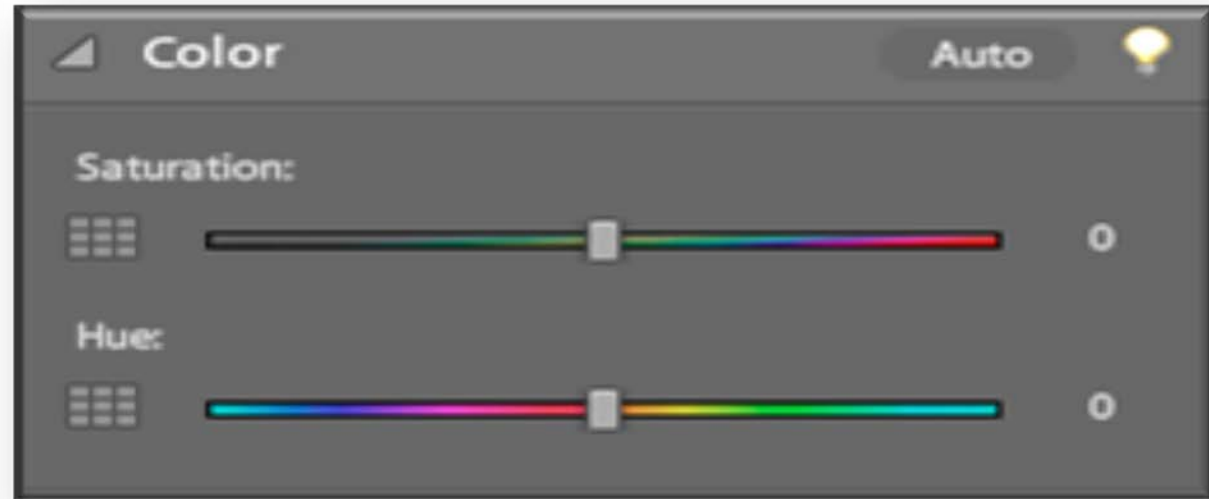
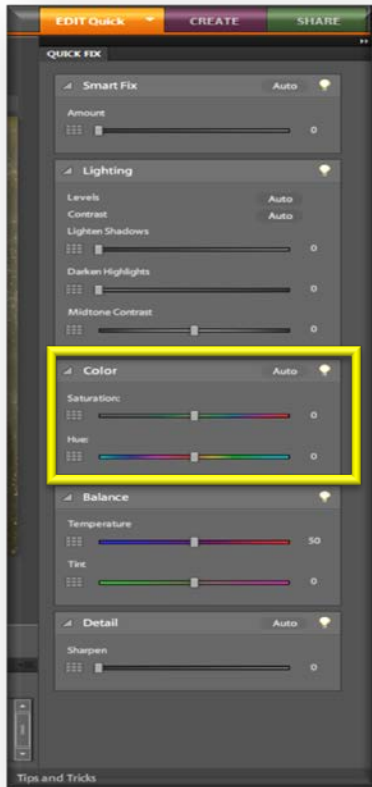


Quick Fix
preview: Color



Quick Fix preview

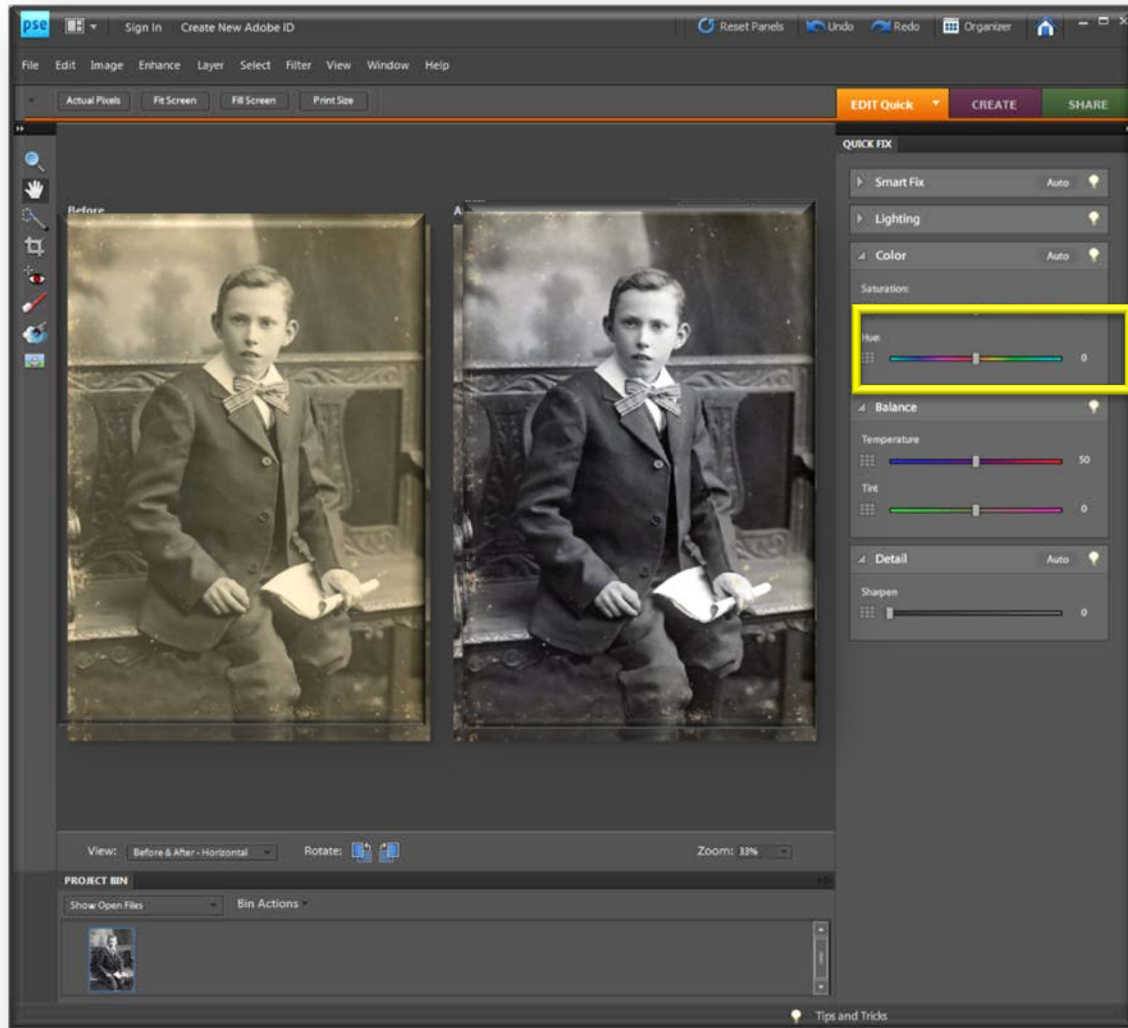


Color

- Adjusts the color by identifying shadows, midtones, and highlights in the image rather than in individual color channels



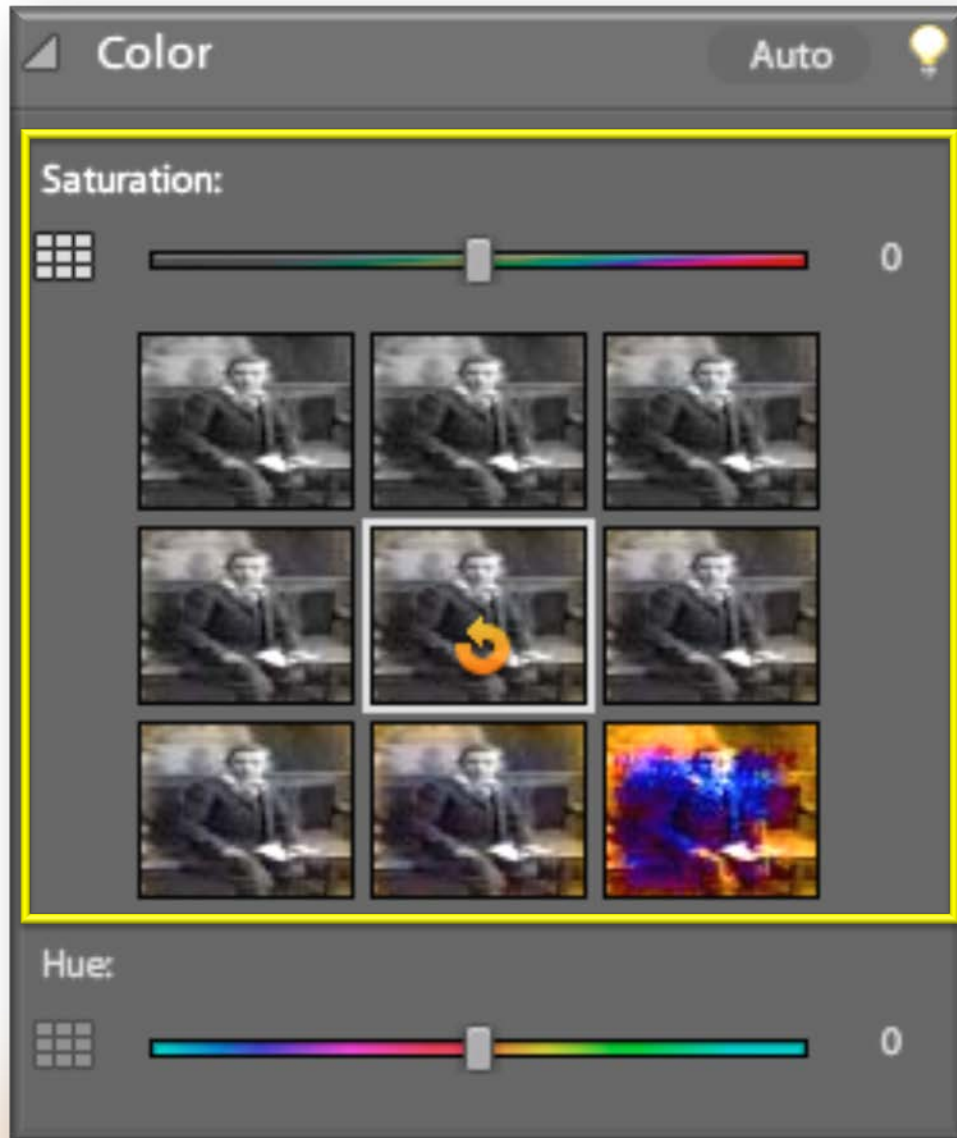
Quick Fix preview



- It neutralizes the midtones, and clips the white and black pixels using a default set of values
- Click the Auto button to apply this command



Quick Fix preview



Color > Saturation

- Drag the slider to make colors more vivid or more muted



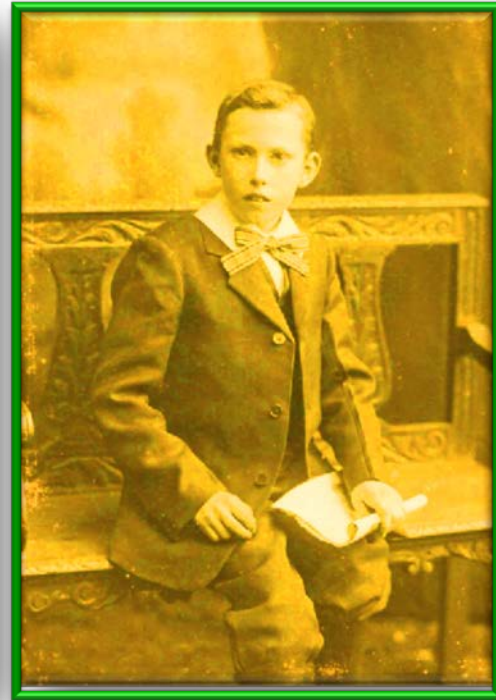
Quick Fix preview



Far Left



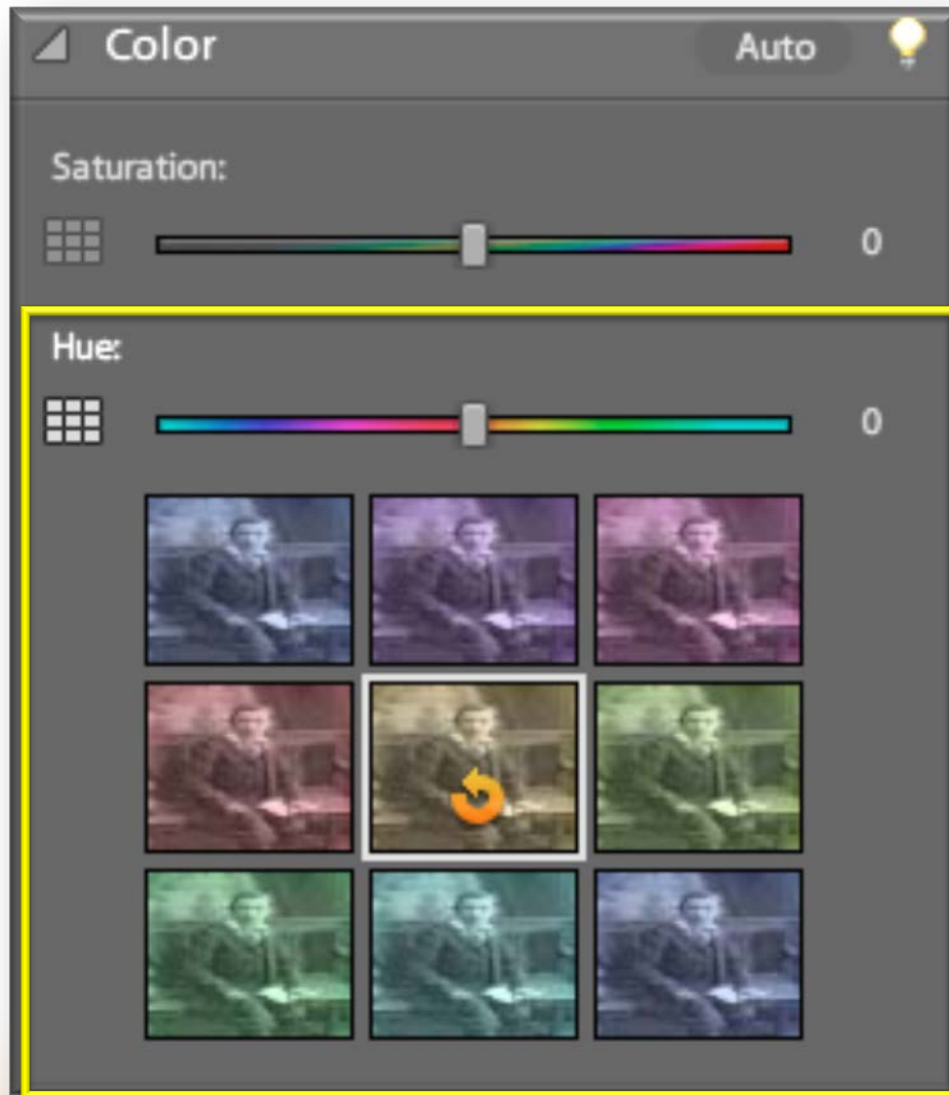
Mid Level



Far Right



Quick Fix preview



Color > Hue

- Shifts all colors in an image
- This control is best used in small amounts or with selected objects whose color you want to change



Quick Fix preview



Far left




Mid Level



Far Right





Any reference to or reproduction of material contained herein should include attribution to MyGenShare.com.

This material may not be reproduced for commercial purposes without permission from the owner.

All trademarks referenced herein are intellectual property of MyGenShare.com.



A production of

MyGenShare.com™

Sharing Information to Join Generations™

© MyGenShare.com 2012. All Rights Reserved.